

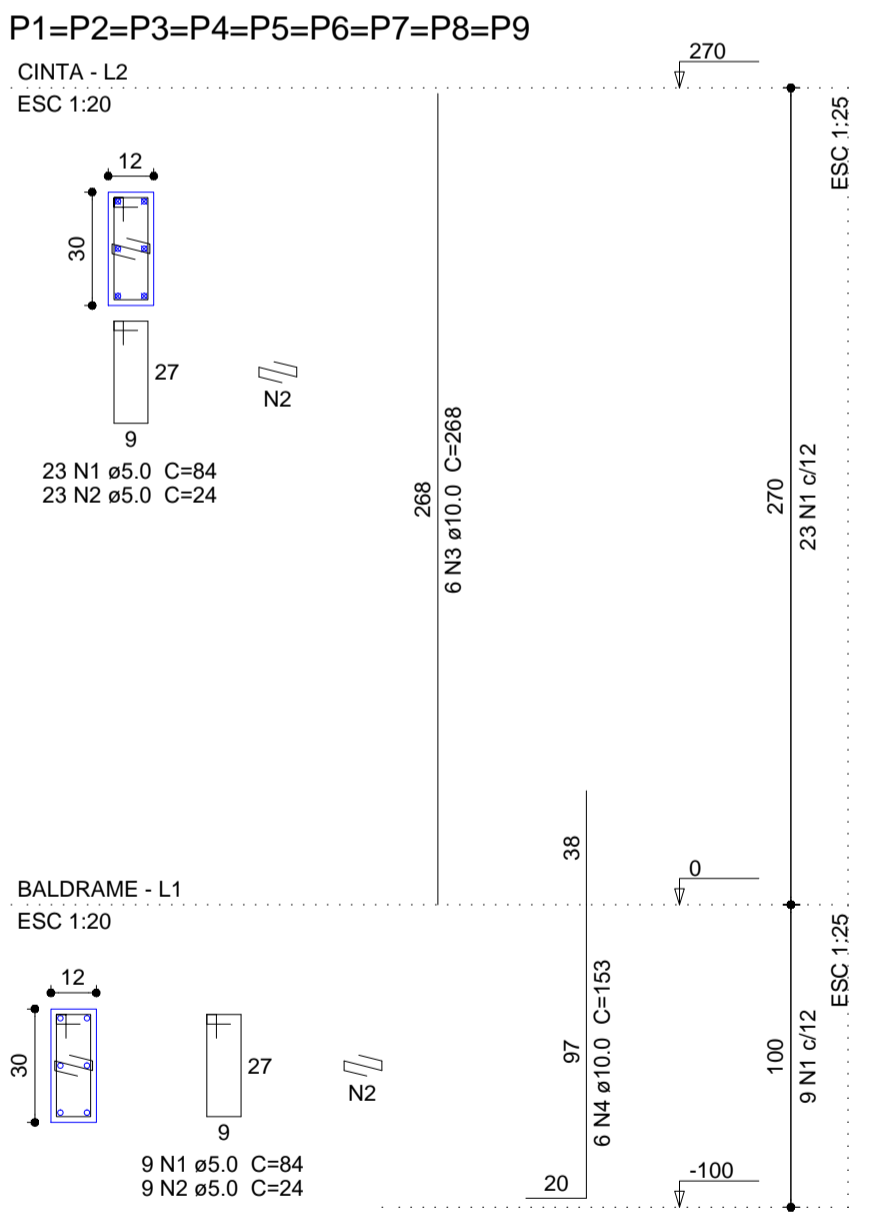
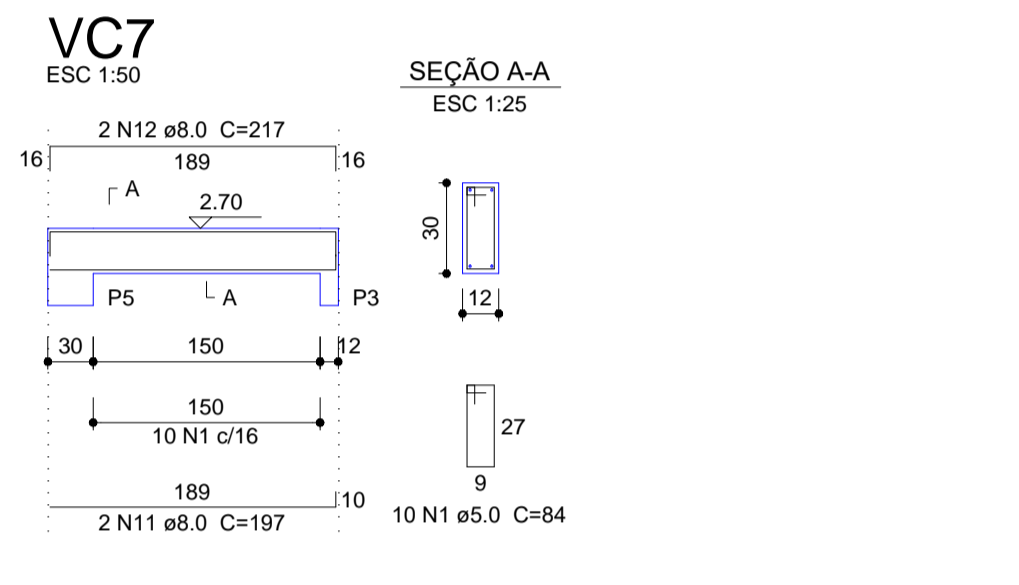
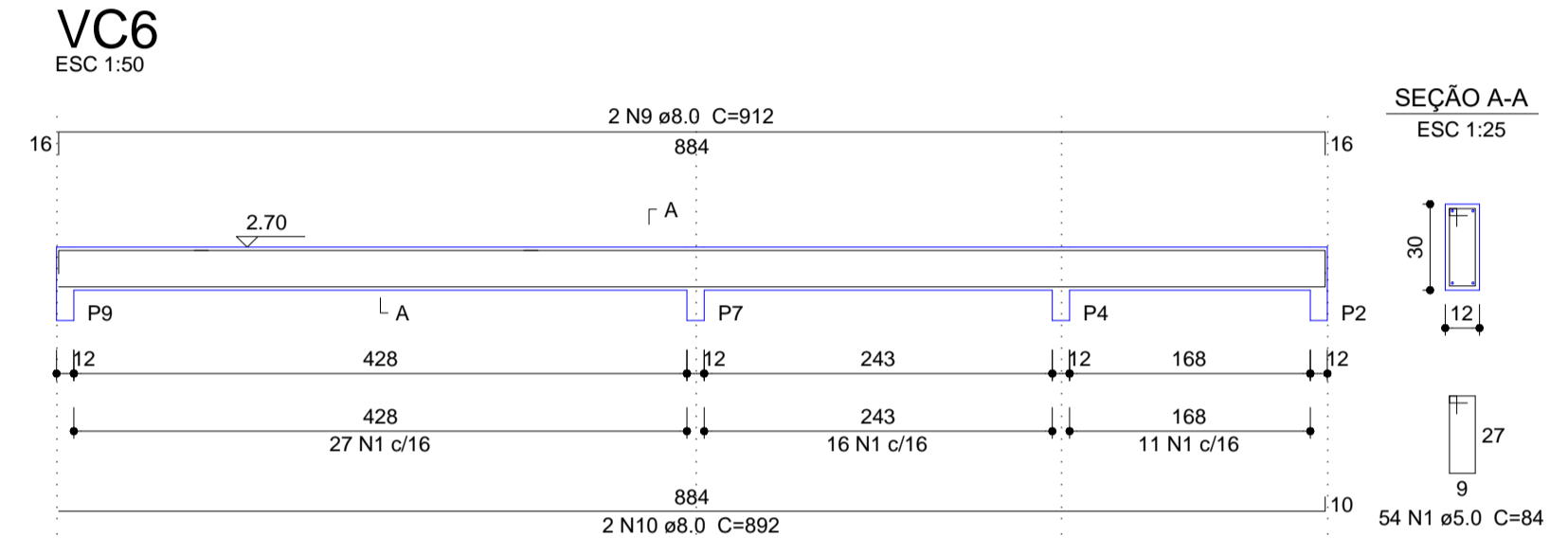
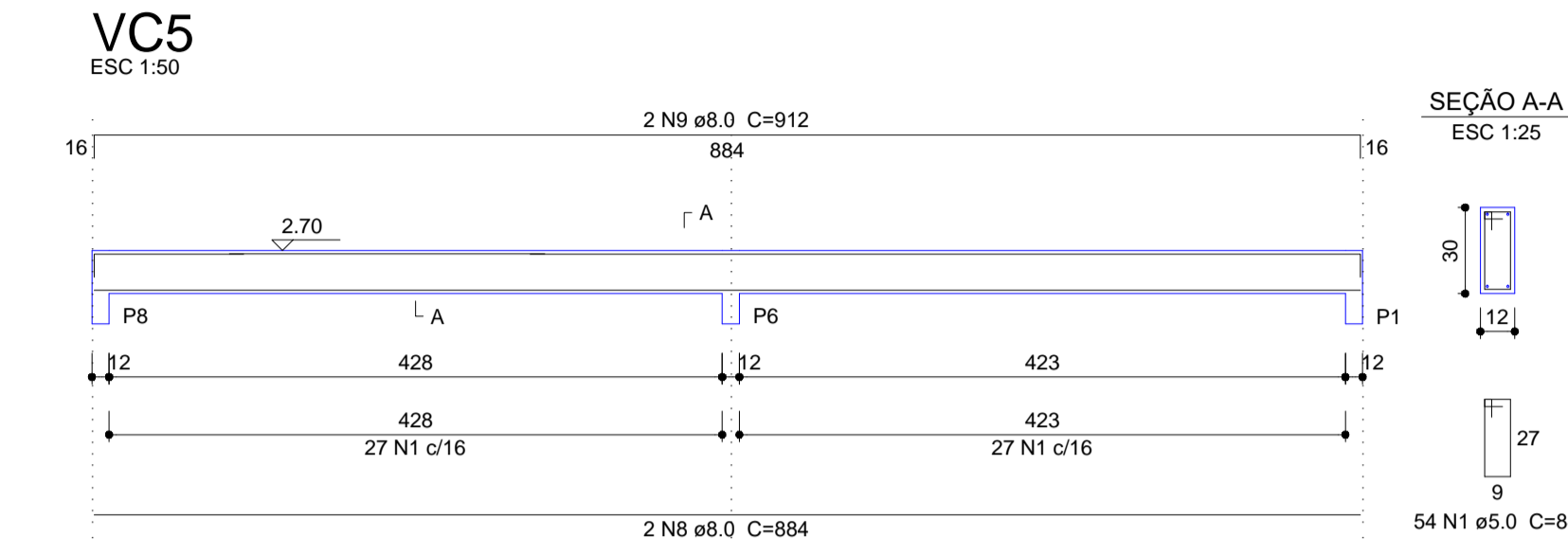
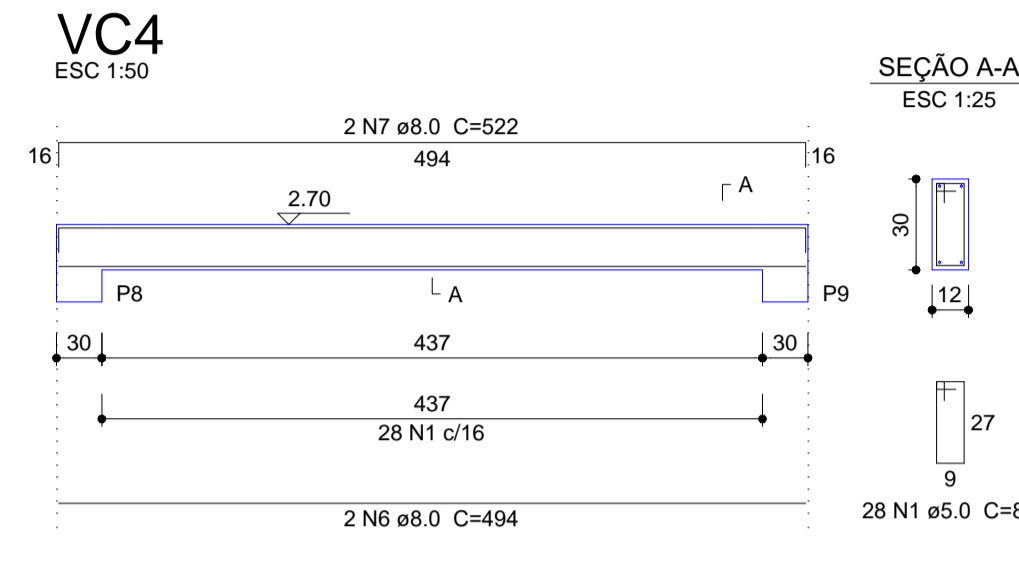
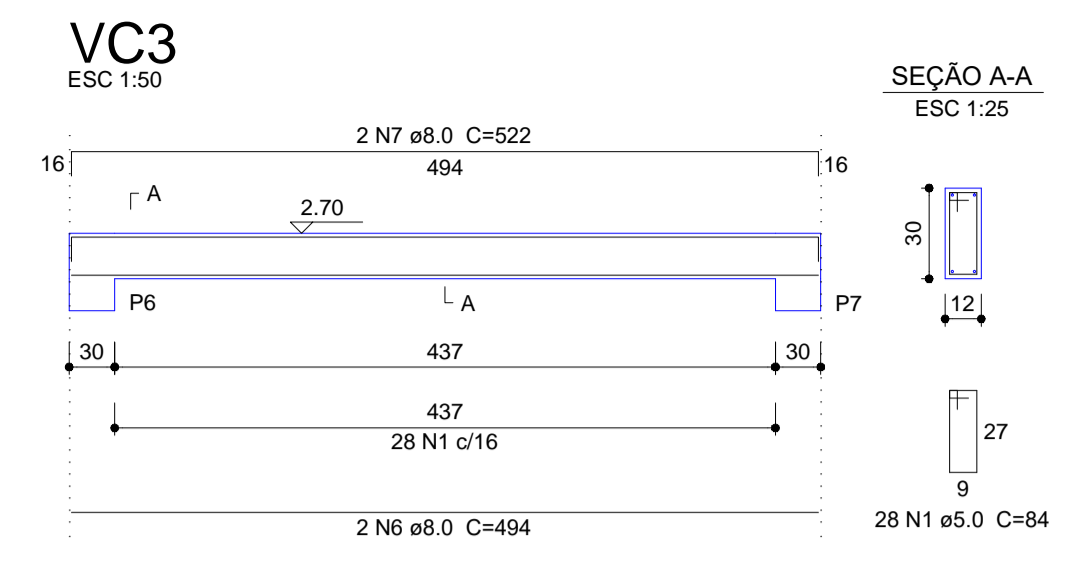
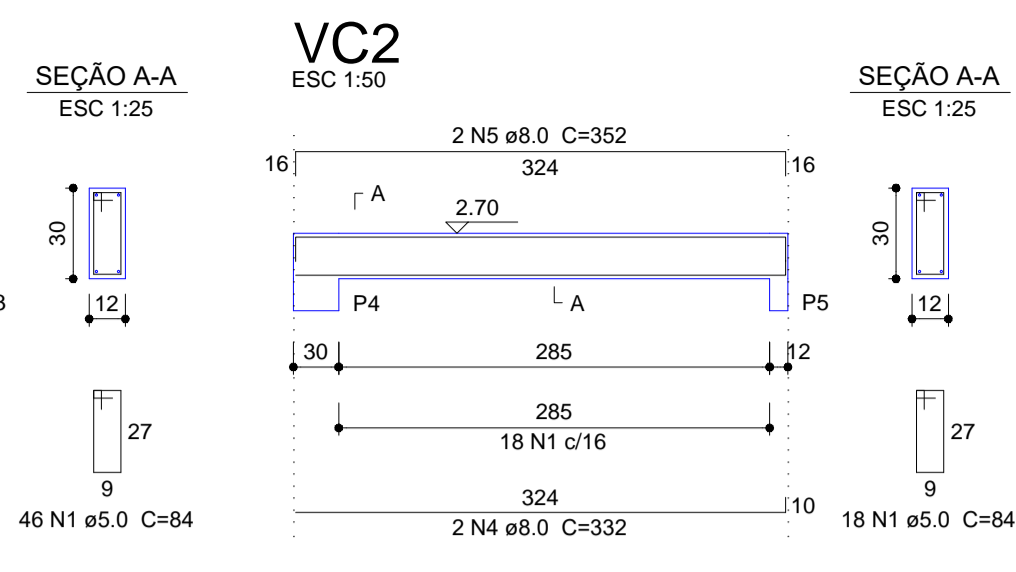
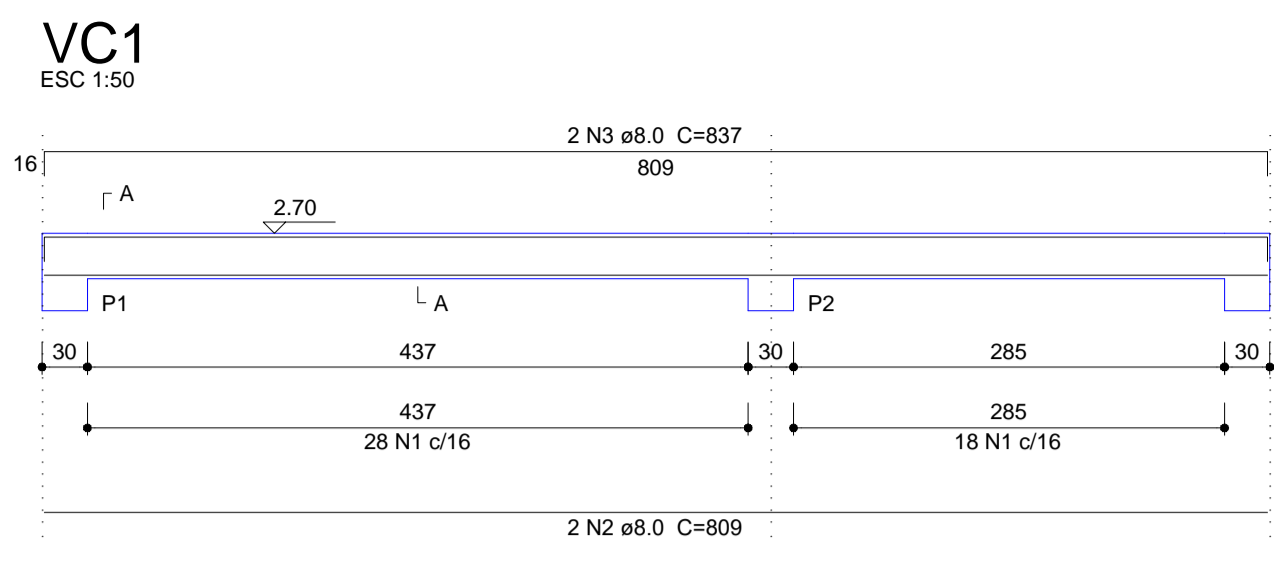
Vigas			
Nome	Seção (cm)	Elevação (cm)	Nível (cm)
VC1	12x30	0	270
VC2	12x30	0	270
VC3	12x30	0	270
VC4	12x30	0	270
VC5	12x30	0	270
VC6	12x30	0	270
VC7	12x30	0	270

Características dos materiais		
fck (MPa)	Ecs (MPa)	
25	24150	

Pilares			
Nome	Seção (cm)	Elevação (cm)	Nível (cm)
P1	12 x 30	0	270
P2	12 x 30	0	270
P3	12 x 30	0	270
P4	12 x 30	0	270
P5	12 x 30	0	270
P6	12 x 30	0	270
P7	12 x 30	0	270
P8	12 x 30	0	270
P9	12 x 30	0	270

Legenda dos Pilares	
	Pilar que morre
	Pilar que passa
	Pilar que nasce
	Pilar com mudança de seção

Forma do pavimento CINTA  
escala 1:50



## Tabela de Resumos

SAPATA		VIGAS BALDRAMES					VC E VP					PILARES																																																																																																																																																																																																																																																																																																																																																																																								
<b>Relação do aço</b> <table border="1"> <thead> <tr> <th>AÇO</th> <th>N</th> <th>DIAM (mm)</th> <th>QUANT</th> <th>C.UNIT (cm)</th> <th>C.TOTAL (cm)</th> </tr> </thead> <tbody> <tr><td>CA50</td><td>1</td><td>6.3</td><td>66</td><td>89</td><td>5874</td></tr> <tr><td></td><td>2</td><td>6.3</td><td>36</td><td>104</td><td>3744</td></tr> <tr><td></td><td>3</td><td>6.3</td><td>12</td><td>109</td><td>1308</td></tr> <tr><td></td><td>4</td><td>8.0</td><td>7</td><td>88</td><td>616</td></tr> <tr><td></td><td>5</td><td>8.0</td><td>8</td><td>73</td><td>584</td></tr> </tbody> </table>		AÇO	N	DIAM (mm)	QUANT	C.UNIT (cm)	C.TOTAL (cm)	CA50	1	6.3	66	89	5874		2	6.3	36	104	3744		3	6.3	12	109	1308		4	8.0	7	88	616		5	8.0	8	73	584	<b>Relação do aço</b> <table border="1"> <thead> <tr> <th>AÇO</th> <th>N</th> <th>DIAM (mm)</th> <th>QUANT</th> <th>C.UNIT (cm)</th> <th>C.TOTAL (cm)</th> </tr> </thead> <tbody> <tr><td>CA60</td><td>1</td><td>5.0</td><td>238</td><td>84</td><td>19992</td></tr> <tr><td>CA50</td><td>2</td><td>8.0</td><td>4</td><td>809</td><td>3236</td></tr> <tr><td></td><td>3</td><td>8.0</td><td>5</td><td>114</td><td>570</td></tr> <tr><td></td><td>4</td><td>8.0</td><td>1</td><td>155</td><td>155</td></tr> <tr><td></td><td>5</td><td>8.0</td><td>2</td><td>332</td><td>664</td></tr> <tr><td></td><td>6</td><td>8.0</td><td>2</td><td>338</td><td>676</td></tr> <tr><td></td><td>7</td><td>8.0</td><td>8</td><td>494</td><td>3952</td></tr> <tr><td></td><td>8</td><td>8.0</td><td>2</td><td>894</td><td>1768</td></tr> <tr><td></td><td>9</td><td>8.0</td><td>1</td><td>200</td><td>200</td></tr> <tr><td></td><td>10</td><td>8.0</td><td>2</td><td>928</td><td>1856</td></tr> <tr><td></td><td>11</td><td>8.0</td><td>2</td><td>892</td><td>1784</td></tr> <tr><td></td><td>12</td><td>8.0</td><td>1</td><td>140</td><td>140</td></tr> <tr><td></td><td>13</td><td>8.0</td><td>2</td><td>921</td><td>1842</td></tr> <tr><td></td><td>14</td><td>8.0</td><td>2</td><td>197</td><td>394</td></tr> <tr><td></td><td>15</td><td>8.0</td><td>2</td><td>203</td><td>406</td></tr> </tbody> </table>					AÇO	N	DIAM (mm)	QUANT	C.UNIT (cm)	C.TOTAL (cm)	CA60	1	5.0	238	84	19992	CA50	2	8.0	4	809	3236		3	8.0	5	114	570		4	8.0	1	155	155		5	8.0	2	332	664		6	8.0	2	338	676		7	8.0	8	494	3952		8	8.0	2	894	1768		9	8.0	1	200	200		10	8.0	2	928	1856		11	8.0	2	892	1784		12	8.0	1	140	140		13	8.0	2	921	1842		14	8.0	2	197	394		15	8.0	2	203	406	<b>Relação do aço</b> <table border="1"> <thead> <tr> <th>AÇO</th> <th>N</th> <th>DIAM (mm)</th> <th>QUANT</th> <th>C.UNIT (cm)</th> <th>C.TOTAL (cm)</th> </tr> </thead> <tbody> <tr><td>CA60</td><td>1</td><td>5.0</td><td>238</td><td>84</td><td>19992</td></tr> <tr><td>CA50</td><td>2</td><td>8.0</td><td>2</td><td>809</td><td>1618</td></tr> <tr><td></td><td>3</td><td>8.0</td><td>2</td><td>837</td><td>1674</td></tr> <tr><td></td><td>4</td><td>8.0</td><td>2</td><td>332</td><td>664</td></tr> <tr><td></td><td>5</td><td>8.0</td><td>2</td><td>352</td><td>704</td></tr> <tr><td></td><td>6</td><td>8.0</td><td>4</td><td>494</td><td>1976</td></tr> <tr><td></td><td>7</td><td>8.0</td><td>4</td><td>522</td><td>2088</td></tr> <tr><td></td><td>8</td><td>8.0</td><td>2</td><td>884</td><td>1768</td></tr> <tr><td></td><td>9</td><td>8.0</td><td>4</td><td>912</td><td>3648</td></tr> <tr><td></td><td>10</td><td>8.0</td><td>2</td><td>892</td><td>1784</td></tr> <tr><td></td><td>11</td><td>8.0</td><td>2</td><td>197</td><td>394</td></tr> <tr><td></td><td>12</td><td>8.0</td><td>2</td><td>217</td><td>434</td></tr> </tbody> </table>					AÇO	N	DIAM (mm)	QUANT	C.UNIT (cm)	C.TOTAL (cm)	CA60	1	5.0	238	84	19992	CA50	2	8.0	2	809	1618		3	8.0	2	837	1674		4	8.0	2	332	664		5	8.0	2	352	704		6	8.0	4	494	1976		7	8.0	4	522	2088		8	8.0	2	884	1768		9	8.0	4	912	3648		10	8.0	2	892	1784		11	8.0	2	197	394		12	8.0	2	217	434	<b>Relação do aço</b> <table border="1"> <thead> <tr> <th>AÇO</th> <th>N</th> <th>DIAM (mm)</th> <th>QUANT</th> <th>C.UNIT (cm)</th> <th>C.TOTAL (cm)</th> </tr> </thead> <tbody> <tr><td>CA60</td><td>1</td><td>5.0</td><td>288</td><td>84</td><td>24192</td></tr> <tr><td>CA50</td><td>2</td><td>5.0</td><td>288</td><td>24</td><td>6912</td></tr> <tr><td></td><td>3</td><td>10.0</td><td>54</td><td>288</td><td>14472</td></tr> <tr><td></td><td>4</td><td>10.0</td><td>48</td><td>153</td><td>7344</td></tr> <tr><td></td><td>5</td><td>10.0</td><td>6</td><td>197</td><td>1182</td></tr> </tbody> </table>					AÇO	N	DIAM (mm)	QUANT	C.UNIT (cm)	C.TOTAL (cm)	CA60	1	5.0	288	84	24192	CA50	2	5.0	288	24	6912		3	10.0	54	288	14472		4	10.0	48	153	7344		5	10.0	6	197	1182	<b>Resumo do aço</b> <table border="1"> <thead> <tr> <th>AÇO</th> <th>DIAM (mm)</th> <th>C.TOTAL (m)</th> <th>PESO (kg)</th> </tr> </thead> <tbody> <tr><td>CA50</td><td>6.3</td><td>109.3</td><td>26.7</td></tr> <tr><td></td><td>8.0</td><td>12</td><td>4.7</td></tr> <tr><td colspan="2">PESO TOTAL (kg)</td><td></td><td></td></tr> <tr><td>CA50</td><td></td><td></td><td>31.5</td></tr> </tbody> </table>		AÇO	DIAM (mm)	C.TOTAL (m)	PESO (kg)	CA50	6.3	109.3	26.7		8.0	12	4.7	PESO TOTAL (kg)				CA50			31.5	<b>Resumo do aço</b> <table border="1"> <thead> <tr> <th>AÇO</th> <th>DIAM (mm)</th> <th>C.TOTAL (m)</th> <th>PESO (kg)</th> </tr> </thead> <tbody> <tr><td>CA50</td><td>8.0</td><td>176.5</td><td>69.6</td></tr> <tr><td>CA60</td><td>5.0</td><td>200</td><td>30.8</td></tr> <tr><td colspan="2">PESO TOTAL (kg)</td><td></td><td></td></tr> <tr><td>CA50</td><td></td><td></td><td>69.6</td></tr> <tr><td>CA60</td><td></td><td></td><td>30.8</td></tr> </tbody> </table>					AÇO	DIAM (mm)	C.TOTAL (m)	PESO (kg)	CA50	8.0	176.5	69.6	CA60	5.0	200	30.8	PESO TOTAL (kg)				CA50			69.6	CA60			30.8	<b>Resumo do aço</b> <table border="1"> <thead> <tr> <th>AÇO</th> <th>DIAM (mm)</th> <th>C.TOTAL (m)</th> <th>PESO (kg)</th> </tr> </thead> <tbody> <tr><td>CA50</td><td>8.0</td><td>167.6</td><td>66.1</td></tr> <tr><td>CA60</td><td>5.0</td><td>200</td><td>30.8</td></tr> <tr><td colspan="2">PESO TOTAL (kg)</td><td></td><td></td></tr> <tr><td>CA50</td><td></td><td></td><td>66.1</td></tr> <tr><td>CA60</td><td></td><td></td><td>30.8</td></tr> </tbody> </table>					AÇO	DIAM (mm)	C.TOTAL (m)	PESO (kg)	CA50	8.0	167.6	66.1	CA60	5.0	200	30.8	PESO TOTAL (kg)				CA50			66.1	CA60			30.8	<b>Resumo do aço</b> <table border="1"> <thead> <tr> <th>AÇO</th> <th>DIAM (mm)</th> <th>C.TOTAL (m)</th> <th>PESO (kg)</th> </tr> </thead> <tbody> <tr><td>CA50</td><td>10.0</td><td>230</td><td>141.8</td></tr> <tr><td>CA60</td><td>5.0</td><td>311.1</td><td>47.9</td></tr> <tr><td colspan="2">PESO TOTAL (kg)</td><td></td><td></td></tr> <tr><td>CA50</td><td></td><td></td><td>141.8</td></tr> <tr><td>CA60</td><td></td><td></td><td>47.9</td></tr> </tbody> </table>					AÇO	DIAM (mm)	C.TOTAL (m)	PESO (kg)	CA50	10.0	230	141.8	CA60	5.0	311.1	47.9	PESO TOTAL (kg)				CA50			141.8	CA60			47.9	Volume de concreto (C-25) = 1.01 m³ Área de forma = 6 m²		Volume de concreto (C-25) = 1.48 m³ Área de forma = 29.51 m²					Volume de concreto (C-25) = 1.48 m³ Área de forma = 29.51 m²					Volume de concreto (C-25) = 1.2 m³ Área de forma = 27.97 m²				
AÇO	N	DIAM (mm)	QUANT	C.UNIT (cm)	C.TOTAL (cm)																																																																																																																																																																																																																																																																																																																																																																																															
CA50	1	6.3	66	89	5874																																																																																																																																																																																																																																																																																																																																																																																															
	2	6.3	36	104	3744																																																																																																																																																																																																																																																																																																																																																																																															
	3	6.3	12	109	1308																																																																																																																																																																																																																																																																																																																																																																																															
	4	8.0	7	88	616																																																																																																																																																																																																																																																																																																																																																																																															
	5	8.0	8	73	584																																																																																																																																																																																																																																																																																																																																																																																															
AÇO	N	DIAM (mm)	QUANT	C.UNIT (cm)	C.TOTAL (cm)																																																																																																																																																																																																																																																																																																																																																																																															
CA60	1	5.0	238	84	19992																																																																																																																																																																																																																																																																																																																																																																																															
CA50	2	8.0	4	809	3236																																																																																																																																																																																																																																																																																																																																																																																															
	3	8.0	5	114	570																																																																																																																																																																																																																																																																																																																																																																																															
	4	8.0	1	155	155																																																																																																																																																																																																																																																																																																																																																																																															
	5	8.0	2	332	664																																																																																																																																																																																																																																																																																																																																																																																															
	6	8.0	2	338	676																																																																																																																																																																																																																																																																																																																																																																																															
	7	8.0	8	494	3952																																																																																																																																																																																																																																																																																																																																																																																															
	8	8.0	2	894	1768																																																																																																																																																																																																																																																																																																																																																																																															
	9	8.0	1	200	200																																																																																																																																																																																																																																																																																																																																																																																															
	10	8.0	2	928	1856																																																																																																																																																																																																																																																																																																																																																																																															
	11	8.0	2	892	1784																																																																																																																																																																																																																																																																																																																																																																																															
	12	8.0	1	140	140																																																																																																																																																																																																																																																																																																																																																																																															
	13	8.0	2	921	1842																																																																																																																																																																																																																																																																																																																																																																																															
	14	8.0	2	197	394																																																																																																																																																																																																																																																																																																																																																																																															
	15	8.0	2	203	406																																																																																																																																																																																																																																																																																																																																																																																															
AÇO	N	DIAM (mm)	QUANT	C.UNIT (cm)	C.TOTAL (cm)																																																																																																																																																																																																																																																																																																																																																																																															
CA60	1	5.0	238	84	19992																																																																																																																																																																																																																																																																																																																																																																																															
CA50	2	8.0	2	809	1618																																																																																																																																																																																																																																																																																																																																																																																															
	3	8.0	2	837	1674																																																																																																																																																																																																																																																																																																																																																																																															
	4	8.0	2	332	664																																																																																																																																																																																																																																																																																																																																																																																															
	5	8.0	2	352	704																																																																																																																																																																																																																																																																																																																																																																																															
	6	8.0	4	494	1976																																																																																																																																																																																																																																																																																																																																																																																															
	7	8.0	4	522	2088																																																																																																																																																																																																																																																																																																																																																																																															
	8	8.0	2	884	1768																																																																																																																																																																																																																																																																																																																																																																																															
	9	8.0	4	912	3648																																																																																																																																																																																																																																																																																																																																																																																															
	10	8.0	2	892	1784																																																																																																																																																																																																																																																																																																																																																																																															
	11	8.0	2	197	394																																																																																																																																																																																																																																																																																																																																																																																															
	12	8.0	2	217	434																																																																																																																																																																																																																																																																																																																																																																																															
AÇO	N	DIAM (mm)	QUANT	C.UNIT (cm)	C.TOTAL (cm)																																																																																																																																																																																																																																																																																																																																																																																															
CA60	1	5.0	288	84	24192																																																																																																																																																																																																																																																																																																																																																																																															
CA50	2	5.0	288	24	6912																																																																																																																																																																																																																																																																																																																																																																																															
	3	10.0	54	288	14472																																																																																																																																																																																																																																																																																																																																																																																															
	4	10.0	48	153	7344																																																																																																																																																																																																																																																																																																																																																																																															
	5	10.0	6	197	1182																																																																																																																																																																																																																																																																																																																																																																																															
<b>Resumo do aço</b> <table border="1"> <thead> <tr> <th>AÇO</th> <th>DIAM (mm)</th> <th>C.TOTAL (m)</th> <th>PESO (kg)</th> </tr> </thead> <tbody> <tr><td>CA50</td><td>6.3</td><td>109.3</td><td>26.7</td></tr> <tr><td></td><td>8.0</td><td>12</td><td>4.7</td></tr> <tr><td colspan="2">PESO TOTAL (kg)</td><td></td><td></td></tr> <tr><td>CA50</td><td></td><td></td><td>31.5</td></tr> </tbody> </table>		AÇO	DIAM (mm)	C.TOTAL (m)	PESO (kg)	CA50	6.3	109.3	26.7		8.0	12	4.7	PESO TOTAL (kg)				CA50			31.5	<b>Resumo do aço</b> <table border="1"> <thead> <tr> <th>AÇO</th> <th>DIAM (mm)</th> <th>C.TOTAL (m)</th> <th>PESO (kg)</th> </tr> </thead> <tbody> <tr><td>CA50</td><td>8.0</td><td>176.5</td><td>69.6</td></tr> <tr><td>CA60</td><td>5.0</td><td>200</td><td>30.8</td></tr> <tr><td colspan="2">PESO TOTAL (kg)</td><td></td><td></td></tr> <tr><td>CA50</td><td></td><td></td><td>69.6</td></tr> <tr><td>CA60</td><td></td><td></td><td>30.8</td></tr> </tbody> </table>					AÇO	DIAM (mm)	C.TOTAL (m)	PESO (kg)	CA50	8.0	176.5	69.6	CA60	5.0	200	30.8	PESO TOTAL (kg)				CA50			69.6	CA60			30.8	<b>Resumo do aço</b> <table border="1"> <thead> <tr> <th>AÇO</th> <th>DIAM (mm)</th> <th>C.TOTAL (m)</th> <th>PESO (kg)</th> </tr> </thead> <tbody> <tr><td>CA50</td><td>8.0</td><td>167.6</td><td>66.1</td></tr> <tr><td>CA60</td><td>5.0</td><td>200</td><td>30.8</td></tr> <tr><td colspan="2">PESO TOTAL (kg)</td><td></td><td></td></tr> <tr><td>CA50</td><td></td><td></td><td>66.1</td></tr> <tr><td>CA60</td><td></td><td></td><td>30.8</td></tr> </tbody> </table>					AÇO	DIAM (mm)	C.TOTAL (m)	PESO (kg)	CA50	8.0	167.6	66.1	CA60	5.0	200	30.8	PESO TOTAL (kg)				CA50			66.1	CA60			30.8	<b>Resumo do aço</b> <table border="1"> <thead> <tr> <th>AÇO</th> <th>DIAM (mm)</th> <th>C.TOTAL (m)</th> <th>PESO (kg)</th> </tr> </thead> <tbody> <tr><td>CA50</td><td>10.0</td><td>230</td><td>141.8</td></tr> <tr><td>CA60</td><td>5.0</td><td>311.1</td><td>47.9</td></tr> <tr><td colspan="2">PESO TOTAL (kg)</td><td></td><td></td></tr> <tr><td>CA50</td><td></td><td></td><td>141.8</td></tr> <tr><td>CA60</td><td></td><td></td><td>47.9</td></tr> </tbody> </table>					AÇO	DIAM (mm)	C.TOTAL (m)	PESO (kg)	CA50	10.0	230	141.8	CA60	5.0	311.1	47.9	PESO TOTAL (kg)				CA50			141.8	CA60			47.9	Volume de concreto (C-25) = 1.01 m³ Área de forma = 6 m²		Volume de concreto (C-25) = 1.48 m³ Área de forma = 29.51 m²					Volume de concreto (C-25) = 1.48 m³ Área de forma = 29.51 m²					Volume de concreto (C-25) = 1.2 m³ Área de forma = 27.97 m²																																																																																																																																																																																																																																																																											
AÇO	DIAM (mm)	C.TOTAL (m)	PESO (kg)																																																																																																																																																																																																																																																																																																																																																																																																	
CA50	6.3	109.3	26.7																																																																																																																																																																																																																																																																																																																																																																																																	
	8.0	12	4.7																																																																																																																																																																																																																																																																																																																																																																																																	
PESO TOTAL (kg)																																																																																																																																																																																																																																																																																																																																																																																																				
CA50			31.5																																																																																																																																																																																																																																																																																																																																																																																																	
AÇO	DIAM (mm)	C.TOTAL (m)	PESO (kg)																																																																																																																																																																																																																																																																																																																																																																																																	
CA50	8.0	176.5	69.6																																																																																																																																																																																																																																																																																																																																																																																																	
CA60	5.0	200	30.8																																																																																																																																																																																																																																																																																																																																																																																																	
PESO TOTAL (kg)																																																																																																																																																																																																																																																																																																																																																																																																				
CA50			69.6																																																																																																																																																																																																																																																																																																																																																																																																	
CA60			30.8																																																																																																																																																																																																																																																																																																																																																																																																	
AÇO	DIAM (mm)	C.TOTAL (m)	PESO (kg)																																																																																																																																																																																																																																																																																																																																																																																																	
CA50	8.0	167.6	66.1																																																																																																																																																																																																																																																																																																																																																																																																	
CA60	5.0	200	30.8																																																																																																																																																																																																																																																																																																																																																																																																	
PESO TOTAL (kg)																																																																																																																																																																																																																																																																																																																																																																																																				
CA50			66.1																																																																																																																																																																																																																																																																																																																																																																																																	
CA60			30.8																																																																																																																																																																																																																																																																																																																																																																																																	
AÇO	DIAM (mm)	C.TOTAL (m)	PESO (kg)																																																																																																																																																																																																																																																																																																																																																																																																	
CA50	10.0	230	141.8																																																																																																																																																																																																																																																																																																																																																																																																	
CA60	5.0	311.1	47.9																																																																																																																																																																																																																																																																																																																																																																																																	
PESO TOTAL (kg)																																																																																																																																																																																																																																																																																																																																																																																																				
CA50			141.8																																																																																																																																																																																																																																																																																																																																																																																																	
CA60			47.9																																																																																																																																																																																																																																																																																																																																																																																																	
Volume de concreto (C-25) = 1.01 m³ Área de forma = 6 m²		Volume de concreto (C-25) = 1.48 m³ Área de forma = 29.51 m²					Volume de concreto (C-25) = 1.48 m³ Área de forma = 29.51 m²					Volume de concreto (C-25) = 1.2 m³ Área de forma = 27.97 m²																																																																																																																																																																																																																																																																																																																																																																																								

CARIMBO DO CREA:	CARIMBO DA PREFEITURA:		
<b>ASSOCIAÇÃO MATO-GROSSENSE DOS MUNICÍPIOS</b> <b>COORDENAÇÃO TÉCNICA E DE PROJETOS</b>  SITE: www.amm.org.br E-MAIL: centraldeprojetosamm@gmail.com <b>ADM. NEURILAN FRAGA</b> INSTITUTO ASSISTENCIAL DE DESENVOLVIMENTO			
TIPO DE OBRA:	INSTITUCIONAL	MODALIDADE:	CONSTRUÇÃO
OBRA:	CONSTRUÇÃO DE BANHEIROS ADAPTADOS DA APAE		
PROPRIETÁRIO/ CNPJ:	PREFEITURA MUNICIPAL DE GUARANTÁ DO NORTE - MT		
ENDEREÇO:	RUA CÂMBUL, QUADRA 11, LOTE 01. BAIRRO NOVO HORIZONTE		
AUTOR DO PROJETO:	GEISE MEDEIROS SILVA		
CREA/CAU:	ENG. CIVIL CREA - MT020454		
RESPONSÁVEL TÉCNICO P/ OBRA:			
<b>PROJETO DE ESTRUTURAS DE CONCRETO ARMADO</b>			
ASSUNTO: FORMA DO PAVIMENTO CINTA, VC, PILARES E TABELA DE RESUMO DE MATERIAIS			
LOCAL DO ARQUIVO:	ÍNDICES URBANÍSTICOS	QUADRO DE ÁREAS	
DATA DE ENTREGA:			
REVISÃO:		Área a Construir: 64,54m²	
ESCALA:			
ART: 000000-0	DESENHO: GEISE MEDEIROS		